



2026 Media Pack

Great gardens, great gardeners, great stories
for gardening and lifestyle content





MEDIA PACK CONTENTS

Contents:

• New faces and old friends in 2026	Page 5
• Snowdrop and spring flower gardens	Page 7
• Affordable days out	Page 9
• By Arrangement gardens	Page 11
• Group gardens	Page 13
• Designer gardens	Page 15
• Relatable gardens	Page 17
• Lifestyle	Page 19
• Connections with Art & Literature	Page 21
• Art in our gardens	Page 23
• Kitchen and GYO gardens	Page 25
• Coastal gardens	Page 27
• Showstoppers	Page 29
• Rectories and Vicarages	Page 31
• Special garden events	Page 33
• Gardens & Health Week 2- 10 May	Page 35
• Men's Health	Page 37
• Community gardens for health and wellbeing	Page 39
• Garden people and high profile supporters	Page 41
• 2027 - marking 100 years of the National Garden Scheme	Page 43
• Branded merchandise	Page 45
• The Year Ahead	Page 46
• Charitable impact	Page 47
• Additional notes to editors, photographers and broadcasters	Page 48
• About the National Garden Scheme	Page 49

Front cover:

New for 2026 Yscirfechan, Brecon, Powys - A unique opportunity to enjoy a sneak peek behind the scenes of a working cut flower farm. River Meadow Flower Farm extends to over an acre, encompassing cut flower beds, herbaceous borders and PYO beds. Nestled in the peaceful Yscir Valley and flanked by the River Yscir, this is a secluded flower-filled haven.

Opens Sunday 19 July, Sunday 9 August and Sunday 30 August - [click for details](#)

16 flower farms open for the National Garden Scheme in 2026 offering different horticultural inspiration for visitors.

LEFT: Paula Davies, garden owner and National Garden Scheme volunteer, in her garden the House on Stilts, Ferryside, Carmarthenshire. One of over 3,500 garden owners with a great garden and a story to tell. For more about House on Stilts [click here](#). To find your perfect case study, garden or interviewee contact vicky@ngs.org.uk



The 2026 season launch of National Garden Scheme gardens promises a wonderful, expanded portfolio of gardens to visit this year - here's a small selection to explore:

New faces and old friends for 2026

It is always exciting to welcome both new people who are opening their gardens for the first time and returning old friends – some of whom have not opened for a good number of years. 2026 offers treats on both fronts with 497 new gardens and 210 returners among the 3,241 gardens set to open in the year ahead. Each is special, not least for the generosity of spirit that permeates from their owners who are so keen to share their horticultural delights with visitors and have been the life blood of the National Garden Scheme for almost 100 years.

2026 kicks off with a fabulous new snowdrop garden in [Norfolk at Brinton Hall](#) with a guided walk with the owners in the historic garden developed over 40 years. Swathes of snowdrops and shrubs planted for winter interest and scent will guide your way. [Shobrooke Park Gardens in Crediton, Devon](#) opens for the Scheme again after a 16 year absence sharing its fabulous woodland garden of spring bulbs and bluebells in April and spring also welcomes [Glenarm Castle Walled Garden in Ballymena](#), County Antrim for the first time with its vibrant tulip displays.

With new gardens we are literally spoilt for choice and variety in both size and style; from country homes like [The Manor House in Ashby St Ledgers](#) famed as the home of Robert Catesby of Gunpowder plot notoriety to cottage gardens like [Upper Bwlch Farm, in Rhayader, Powys](#) designed by Charlie Dimmock to delightful, cleverly designed urban plots like [1 Belton Close in Brighton](#). And they are spread all over the country: from the Italianate villa gardens of [Wylam House in Torquay, Devon](#) to the hidden, permacultural gem of [42 St Mary's Field in Morpeth, Northumberland](#) and the bijou plot at [26 Leyland Park in Ballycastle, County Antrim](#), with its stunning views of Knocklayde Mountain.

With their gracious plots and lovely planting we can never have enough Old Rectory and Vicarage gardens (there are 75 opening in 2026) read more on [page 31](#) or enough relatable gardens, plots behind ordinary homes that inspire us all to turn our patches into something joyous. In 2026 inspiration abounds at [The Mount in Keswick](#), where nature is allowed the upperhand and self seeding rules, and at [Duart House in Gloucester](#) where the 1/3 acre garden is packed with a profusion of plants, including a fabulous kitchen garden and 30 roses.

Growing your own food has never been more popular, with many gardens creating vegetable plots or planting fruit and veg in their traditional borders, or others coming together as part of a community endeavour. Joining the 28 allotment groups opening in 2026 are the [Charlton Road Allotments in Bristol](#), a community allotment with a specific remit to be a safe, fully-accessible, engaging and stimulating space for people living with dementia, and their carers, to continue experiencing the therapeutic benefits of gardening into later life.

2026 TASTER IMAGE GALLERY of some of the 497 new gardens [CLICK HERE](#)

LEFT: 24 Rose Walk, St Albans, Hertfordshire © Marina Walker

New in 2026. A newly designed, family garden offering year-round enjoyment. Featuring mature trees, new plants, a pond, and a vegetable patch, it boasts multiple seating areas and focal points. A path leads to a physiotherapy room which is surrounded by plants which provide structure, texture, colour, and scent, to create a restorative and accessible space, fostering wellbeing and connection with nature. Opens Saturday 30 May - [click here for details](#)



The Down House, Hampshire
© Leigh Clapp

Wed 18, Thur 19 Feb (1-4.30). Adm £12, chd free. Pre-booking essential, please [CLICK HERE](#) for information & booking. Thur 23 July (2-5). Adm £8, chd free. Home-made teas. Home-made teas inc.

Snowdrop and spring flower gardens

Spending time in a garden after the dark days of winter has been proven to significantly improve wellbeing*. Visitors feel more relaxed, happy and excited in the gardens, and less stressed, sad and bored and, not surprisingly, the more time visitors spend in winter gardens, the higher their wellbeing.

With 175 gardens set to open from January to March 2026 the National Garden Scheme is well placed to offer that wonderful early wellbeing boost. 120 snowdrop gardens and others bejewelled with spring flowers will open their gates offering galanthophiles, curious horticulturalists, plant hunters and those looking for garden inspiration the perfect opportunity to enjoy drifts of delicate snowdrops and delightful dolly mixtures colours of crocuses, iris, hellebores and more. With warming refreshments and the chance to buy plants these open days are the perfect start to the garden visiting season.

Commenting National Garden Scheme Chief Executive, Dr Richard Claxton says: “Getting out into a garden or green space in the winter is a fabulous way to boost depleted energy levels. Not only does being outside help reduce stress levels and blood pressure but it’s also when your vitamin D is at its lowest making winter sunshine hugely beneficial. Whatever the weather, wrapping up warm and enjoying the first delicate signs of spring, and enjoying them with others, is a real tonic after the long dark days of winter.”

Find all our January and February garden openings
[BY CLICKING HERE](#)

For more content, facts and videos [click here](#).

[CLICK HERE FOR THE IMAGE GALLERY](#)

*Winter garden visits research

The wellbeing benefits of visiting National Garden Scheme gardens in winter
Dr Emma White

Research published by the National Garden Scheme confirms the important health benefits that visiting a garden in the darkest days of winter can provide. Respondents felt that winter is the perfect time to observe the emergence of new growth and experience the unique joy of spring flowering bulbs. It is a great time to appreciate the structure of a well-designed garden, and respondents noticed lots of wildlife and beneficial natural features. Whatever the season, we should all try to get out into gardens more, observe the plants and nature around us, and feel the benefits. **Find out more** [Read the report](#)



The wellbeing benefits of visiting
National Garden Scheme gardens in winter
Report January 2024



Affordable days out Great value visits & children go free

Providing access to often exclusive private gardens with the added benefit of friendly and helpful advice from knowledgeable garden owners, visits to National Garden Scheme gardens have always represented good value for money. The average admission price in 2026 to a National Garden Scheme garden is **£6.37 (up just 24p on 2025)** for an adult and, in most cases, children under 16 go free.

“From the first opening in 1927, when admission was a shilling a head, the National Garden Scheme has always endeavoured to provide affordable access to gardens for all,” says Chief Executive, Dr Richard Claxton. “Compared to many other gardens open to visitors in the UK – some of which can set you back a lot more – our gardens remain very affordable.”

Many gardens also have plants and produce for sale at prices below the usual nursery price and homemade cakes and teas also offer excellent value for money.

“The best value are our group gardens where an average ticket – which could provide you with access to between three and ten gardens – is just **£7.45 (up just 15p on 2025)**. In a time when we are all tightening our purse strings it’s good to know that you can still enjoy a day out in a beautiful garden without breaking the bank. And, knowing that any admission you do pay goes to some of the UK’s best-loved nursing and health charities really is the icing on the cake.”

You can view all our group gardens by [clicking here](#)





By Arrangement gardens Exclusive to you or your group

The National Garden Scheme opens over 3,200 private gardens to the public each year. Most visitors are familiar with the gardens that open their gates to everyone on set days, but in 2026, 590 of them also open By Arrangement and a further 339 only By Arrangement.

These wonderful, often hidden gems are worth exploring, especially if you are keen to return to a garden you love, perhaps missed a public open day or want to explore somewhere uncharted. By Arrangement gardens cater for different group sizes from as few as one to 20+, it all depends on the size and accessibility of the garden, some have fixed prices for entry others are agreed in discussion with the garden owner.

Among those opening only By Arrangement are:

[Ballynalack Road, County Down](#) - overlooking Camlough Lake

[Brampton, Salisbury](#) - open in June for groups of 10-30

[Bentley House, Cleveland](#) - large rural cottage garden, 6 June - 6 September

[Claverhouse, Shanklin, Isle of Wight](#) - small sloping garden 15 June - 14 September

[Link Hill House \(NEW\) Cranbrook, Kent](#) - a walled garden brought back to life

[Malibu, Wadebridge, Cornwall](#), yards away from the Coast Path, stunning views over the beach and headland, Malibu has a sheltered compact garden to the rear and a general interest front garden. (Pictured left)

[New Inn Farm, Abergavenny](#) - the gorgeous garden of Times garden writer Stephen Anderton and his wife Judith, July to September for groups 12-32

[Ransomes, Colchester](#) (NEW) two acres with a focus on biodiversity - colourful cottage garden and wildlife meadows. An orchard, soft-fruit garden, an apiary and a productive vegetable garden with greenhouse and potting shed provide both homegrown produce and a plant nursery for the garden. By Arrangement May to September for groups 10-30.

[Rhos Eithin, Ceredigion](#) (NEW) A new garden started in 2020 which features very little hard landscaping, intentionally soft edges, and has an ethos of treading lightly to enhance ecological value.

"Booking a By Arrangement garden visit with the National Garden Scheme was a joy. I spoke directly with the garden owner to arrange a time that suited us both and was able to treat mum, family and friends to a really special day out in a garden open just for us!"

[For By Arrangement gardens by county click here](#)

Photo left: Malibu, Cornwall
For a selection of images [click here](#)



Group gardens Great value for money in vibrant communities

Group gardens offer fabulous value for money, with an average ticket – which could provide you with access to between 2 and 10+ gardens – just £7.45 in 2026. Group gardens tend to bring together a delightful mix of smaller gardens in a village, town or city but they can also include the manor house, cottages, allotments and community gardens.

In 2026, 195 groups open for the National Garden Scheme representing 966 gardens in all.

Some wonderful examples include:

[Steppingley Village Gardens, Bedfordshire](#) - opening in April and May
[Flore Gardens, Northamptonshire](#) - opening 12 April and 20,21 June
[Broughton Poggs & Filkins Gardens, Gloucestershire](#) - opens 17 May
[West Malling Early Summer Gardens, Kent](#) - open 31 May
[Grange over Sands Hidden Gardens, Lancashire](#) - open 28 June
[Faversham Open Gardens](#) - over 25 small and larger town gardens 28 June
[De Beauvoir Gardens, Hackney](#) - opens 31 May
[Long Crendon, Buckinghamshire](#) - opens 12 April and 7 June
[Stetchworth and Dullingham Gardens, Suffolk](#) - opens 10 May
[Ainsdale & Birkdale Gardens, Merseyside](#) - opens 31 May and 12 July

And some NEW groups opening in 2026:

[Upper Mill Gardens](#), West Glamorgan - six gardens opening 10 May
[Canonbury Gardens](#), Islington, London - six gardens opening 31 May
[Southwell Gardens](#), Nottinghamshire - three gardens opening 31 May
[Tenby Gardens](#), Pembrokeshire - five gardens opening 13 and 14 June
[Nutbourne Village Gardens](#), West Sussex - four gardens opening 19 and 20 June
[Grove Road Gardens](#), Bridgend - five gardens opening 28 June
[Churchdown Gardens](#), Gloucester - four gardens opening 28 June
[Trefeglwys Gardens](#), Powys - five gardens opening 5 July
[Mellor & Clayton-le-Dale Gardens](#), Blackburn - three gardens opening 11 July
[Llanwrtyd Wells Gardens](#), Powys - six gardens opening 11 July
[Llanfechain Gardens](#), Powys - seven opening 26 July

Photo left: One of the over 25 gardens that open as part of the Faversham Open Gardens in Kent on Sunday 28 June.



Designer gardens

Great gardens by great designers

Many of the gardens that open for the National Garden Scheme have been designed by professionals, creating added inspiration to our portfolio of garden openings.

Among the designer gardens in 2026, [Lasborough Park, Tetbury](#) 12 acres of formal lawns, shrub, roses and herbaceous borders, topiary, woodland garden and parterre garden. The planting throughout reflects the fruits of a long collaboration between the owner and Tom Stuart-Smith. Opens 24 June and 26 August.

[Stonelands House, Dawlish](#) has extensive landscaping carried out under designs by Arabella Lennox-Boyd resulting in the present planting scheme. With plenty more planting and re-design to come the garden should be ever-changing, adding to the already significant collections. Opens By Arrangement April to June.

[The Garden Studio, Colchester](#) owned by five times Chelsea Flower Show medalist Andrea Parsons, she'll be on hand to discuss design ideas and answer visitor questions. Opens 6 and 7 June.

[Upper Bwlch Farm in Powys](#) is a small cottage garden, created and featured on BBC Garden Rescue and designed by Charlie Dimmock turning the rural plot into a country garden.

[East Cliff on the Isle of Wight](#), designed by Arabella Lennox-Boyd, returns in 2026 on Saturday 6 June. When designing the garden, Arabella took into consideration the cliffside location, the wind, and sea air, selecting plants suited to the environment. Her inspired design features a series of distinct and beautiful garden areas.

Arne Maynard's stunning design at [South Wood Farm in Devon](#) is a country garden exemplifying how contemporary design can be integrated into a traditional setting. Herbaceous borders, roses, yew topiary, knot garden, wildflower meadows, wildlife ponds, orchards, lean-to greenhouses and a mouthwatering kitchen garden create an unforgettable sense of place. Opens 19 April, 6 and 7 June.

(Pictured left c. Ellen Rooney)

RHS Gold Medal winner Dan Bristow also opens his small, boldly planted garden in Wales in September at [Craig Ogwen](#).

You can see a full list of Society of Garden and Landscape Designers gardens that open for the National Garden Scheme in 2026 by [clicking here](#)

Six beautifully designed and National Garden Scheme funded [Horatio's Gardens](#) and five [Maggie's](#) gardens also open for us in 2026 too.

For a taster of some images of designer gardens [CLICK HERE](#)



Relatable Garden inspiration you can take home

From rolling acres belonging to stately homes to country idylls, urban oases and allotments the variety of gardens opening for the National Garden Scheme is 2026 is as diverse as ever. All are packed with inspiration and the friendly advice of the garden owner to take home.

With terraced and semi-detached homes making up the majority of private sector dwellings in the UK it's not surprising that in the National Garden Scheme there are some wonderful relatable gardens all providing inspiration to visitors.

[1 Belton Close, Brighton](#) is a compact city garden designed around a bold extension with outdoor kitchen and beds planted for sun and shade. (Pictured left).

[4 Buttermere Close in Formby, Merseyside](#) (which opens as part of Formby Gardens) is a corner plot made on shallow, sandy soil with many plants of special interest and adapted to a coastal site with poor soil.

Other small gardens that pack a punch are [Fernveil Gardens, Barnet](#) which offers a 65 metre wander around arid beds, tropical plants, a fernery, and woodland, ending in a bamboo forest and a Mongolian yurt.

[209 Friern Road, East Dulwich](#) is a garden that wraps around a terraced house and taking visitors through a series of four interlinked spaces. With exuberant, relaxed planting, it's a garden with a house in it, rather than the other way around.

[35 Millers Gardens, Wells, Somerset](#) is a small city garden that takes full advantage of a south facing slope to grow Mediterranean and tender plants.

[12 Queen Elizabeth Close, Bedfordshire](#) is a small town garden with a jungle, rainforest feel - it's all about the foliage and [18 Pettits Boulevard in Romford, Essex](#) is an intriguing garden on three levels behind a semi-detached house.

There's also [Besom Cottage in Gloucestershire](#) - a landscape architect's garden created from a former pub car park. Tiered with large, local boulders and planted with ornamental and native planting surrounding a circular lawn. Features inc an ornamental pond, stumpery, woodland fern garden and garden art. The garden falls from the road to a stream with stepped paths. A separate vegetable garden and orchard are part of the property.

Photo Left: 1 Belton Close, Brighton



Lifestyle

Gardens with added extras

National Garden Scheme gardens don't just provide horticultural inspiration they also showcase some wonderful finishing touches that bring a garden to life. Places to eat, places to sit, places to simply be in a garden, places to enjoy the joy, from tiny decorated hideaways to sheds and follies and natural swimming ponds, there are ideas a plenty on a visit to a National Garden Scheme garden.

Take a look at [Green End Farm](#) for a marriage of modern design and tradition. The clever design encourages both exploration and relaxation, and the garden combines traditional charm with contemporary touches. Sweeping borders are filled with a mixture of perennials and hedges and trees are used to create difference zones, chosen for colour, texture, and wildlife appeal.

Or there are two great 'homesteads' in Cheshire to inspire. [The Homestead in Knutsford Cheshire](#) a compact gem of a garden has been created over the last 10 yrs by a keen gardener and plantswoman. Enter past groups of liquidambar and white stemmed birch. Colour themed areas with many perennials, shrubs and trees. Past topiary and obelisks covered with many varieties of clematis and roses, enjoy the colours of the hot border. A decorative greenhouse and pond complete the picture.

[The Homestead in Macclesfield, Cheshire](#), laid out in 1920, the garden is separated by hedges into several 'rooms' with seating areas, including a sunken garden, a wild lakeside area with a restful cabin, a main lawn bordered by espaliered fruit trees and mature borders, and raised beds for growing cut flowers.

Try also [13 Gravenhurst Road in Bedfordshire](#), an artist's garden designed predominantly in the classic cottage garden style, with a mix of traditional and contemporary planting. The gravel garden closest to the cottage hosts a pond with hydrangea Annabelle borders down one side and fruit trees on the other. Attractively wild, with self set verberna bonariensis and bronze fennel, plus elegant pots of roses and unusual salvias, and fig. A gated entrance opens on to a long path leading to the secret garden. This main garden features an array of outbuildings including artist's studio, an open-sided garden room with log burner, and glasshouses.

The people behind the gardens are also pretty inspiring and we're happy to connect you to our garden owners for those really relatable garden styling and creation stories. From gardens built on [rubbish tips like the Secret Garden in Truro](#) and fully blown organic patches to upcycling creatives and [climate resilient champions](#) like Sally Morgan at [The Old Coach House](#) in Somerset.

If you're looking for inspiration for a relatable or lifestyle garden feature

Photo Left: A cosy corner at [The Homestead, Macclesfield, Cheshire](#)



Connections with art & literature

Gardens with a link to renowned writers or artists

A number of gardens that open for the National Garden Scheme have links to historic and modern day artists and writers.

In 2026, the garden of Lee Miller, the model and war photographer and star of the biopic 'Lee' starring Kate Winslet, opens in Sussex on 20 June see: [Farleys Sculpture Garden](#).

We're also delighted to be offering the chance to visit the garden of Silvia Plath and Ted Hughes' daughter, poet, writer and artist Frieda Hughes. This special event gives access to the garden and gallery not usually open to the public with an introduction from Frieda. Pre-booking is essential on 10 June and 15 July at [Fairedene Gallery Garden](#) in Montgomery.

Or visit the home of artist Matthew Rice at Ham Court in Oxfordshire - a project started with his former wife Emma Bridgewater - [details here](#)

Other gardens with lovely literary connections include:

[Great Maytham Hall, Kent](#) - inspiration for Frances Hodgson Burnett's iconic novel *The Secret Garden*

[Gwaenynog, Denbigh](#) - where Beatrix Potter wrote & illustrated *The Tale of the Flopsy Bunnies*

[Godmersham Park, Kent](#) - historical links to Jane Austen

[Goodnestone Park, Kent](#) - historical links to Jane Austen

[The Old Rectory, Farnborough, Wantage](#) - former home of John Betjeman

[Rydal Mount, Cumbria](#) - the historic home of the Wordsworth family. The poet, William Wordsworth, was a talented landscape gardener as well as a poet, and the Rydal Mount garden is the largest example of his design. The garden stretches over 5 acres, including terraces that Wordsworth built, informal herbaceous borders, trees planted by the poet, and a wonderful range of traditional lakeland plants.

[The Red House, Suffolk](#) - former home of Benjamin Britten

[Elizabeth Gaskell's Garden, Manchester](#)

Photo Left: Gwaenynog, Joe Wainwright



Art in our gardens

More than a garden visit

Gardening is a creative pursuit so it's little surprise that many National Garden Scheme gardens are owned by painters, sculptors, designers and ceramicists. Some display and sell their work, some allow access to their studio's, other garden owners host art exhibitions or have displays of sculpture adding interest to their planting - each gives a unique flavour to the garden visiting experience.

There's a wonderful variety to explore in 2026 from the modelmakers rooftop garden at [100 Colne Road, Twickenham](#) to the garden of award-winning British furniture designer John Makepeace, [Farrs in Dorset](#).

Also in London, ceramicist Gill Usher has filled her garden with sculptural ceramics and recycled, found objects at [19 Belgrave Road, East London](#).

Two Royal Academy artists open their garden at [Annal's Gallery, Dorset](#). Hidden amongst the plants are sculptures and the old walls are hung with paintings. Entrance is through the cottage studio/conservatory where everything is handmade and sculptured by the owners. Some works are for sale.

[Glasfryn Hall in Flintshire](#), home to Oriel Glasfryn Gallery, featuring work by leading Welsh artists will, for the first time this year open for the National Garden Scheme to co-incide with its summer exhibition meaning that both the house and main gallery will be open, displaying the work of more than 40 leading Welsh artists, including painters, ceramicists, jewellers and sculptors. Opens 29, 30 and 31 August.

Or there's visitor favourite, [Greatcombe in Devon](#) with its artist's studio with paintings and cards and 'Made by Robbie' metalwork artefacts & garden supports for sale. It's a hidden gem, providing both inspiration and tranquillity. The garden offers a wide range of plants and planting schemes adding interest around every corner. Featuring flowering shrubs, mature trees, herbaceous borders, colourful pots, a moorland stream, acers and unusual hydrangeas.

For a full list of great gardens with an artistic twist [click here](#)

Photo Left: Greatcombe, Ashburton, Devon



Kitchen gardens and grow your own Great produce for home and the community

Many National Garden Scheme gardens include green houses and vegetable patches where owners produce edibles for their own consumption, others work on a more commercial scale like the stunning [Goldstone Hall Gardens](#) in Shropshire or the restored walled kitchen garden at [Foscote Manor](#) in Buckinghamshire.

We've got [The Yeo Valley Organic Garden](#) at Holt Farm opening in April and the exquisitely enviable kitchen garden at the [Old Manor Farmhouse](#) (also Henschman's topiary winner in the home gardener category) which is not to be missed when it opens on three dates in June.

For carefully managed kitchen gardens that ensure an abundance from the land while protecting and maintaining the fertile alluvial soil, [Thyme in Gloucestershire](#) is worth a visit when it opens on 5 August.

NEW for 2026 is the [Old Coach House, Somerset](#) - which includes an orchard, potager, clover lawn, extensive ornamental borders, salvias and greenhouse. Managed organically with biodiversity at its core.

28 allotment groups will also open in 2026 where visitors can pick up growing tips from a diverse range of allotment holders.

NEW in 2026 [Charlton Road Allotments](#), Bristol (pictured), is a community allotment with a specific remit to be a safe, fully-accessible, engaging and stimulating space for people living with dementia, and their carers, to continue experiencing the therapeutic benefits of gardening into later life.

Or try the [Willoughby Road Allotments](#) in Lincolnshire, [Paddock Allotments](#) in South London, [St Margaret's Allotments](#), County Durham, [C2C Grows - Community Allotment Garden](#), Northampton, and [find them all here](#).

When it comes to growing food there's no minimum or maximum plot - many of our gardens plant edibles among their perennials and others we support through our Community Garden Grants like [York House Community Garden](#) in Buckinghamshire, grow food for local food banks.

For all gardens with 'Grow your Own' elements [click here](#)

For a selection of images [click here](#)



Coastal gardens

With their often fabulous views and windy, climatic challenges, coastal gardens provide a particularly enticing destination for the garden visitor. From Cornwall to Northern Ireland the National Garden Scheme has a collection of inspiring coastal gardens to visit in 2026.

NEW in 2026 is [Wylam House in Torquay, Devon](#) a mid C19 Italianate Villa, built in 1861, with two acres of semi-formal decorative gardens with commanding magnificent views over Torbay. Opens 23 and 24 May.

Also new is [Fernleas in Folkestone](#) with views to France and Dungeness - a lovely mix of coastal planting, wildflowers and kitchen garden.

At the most southerly tip of Cornwall the charming [Chygurno](#) is a delightful creek side garden overlooking Lamorna Cove that opens in April and July. Or head into Devon for [Mothecombe Garden](#) near Plymouth, with its camellia walk and blue bell wood, bee garden with 250 lavenders and six acre wildflower pasture it's a dream of a place with a sandy beach at the bottom of the garden. Opens 14 June.

In Anglesey [The Old School](#), a garden created from 'brambly wilderness' with views over the Menai Strait opens only By Arrangement from March to June for groups of 15+.

And the wonderful show stopping garden at [East Cliff](#), designed by Arabella Lennox-Boyd opens on the Isle of Wight on 6 June.

[Tremichele on The Lizard in Cornwall](#) is a 1 acre coastal garden overlooking the Atlantic and the Lizard Lighthouse with a productive kitchen garden, raised beds and fruit trees. It open By Arrangement only from April to July for groups up to 15.

There are some great value group gardens on the coast too including:

[Tenby Gardens](#) in Pembrokeshire

And in Kent there's a huge catch: [Pegwell & West Cliff Gardens, Ramsgate](#) 5 July, [Ramsgate Gardens](#) on 6 September, [Whitstable Town Gardens](#) on 7 June and [Whitstable Joy Lane Gardens](#) Sunday 10 May, [Tankerton Gardens](#), 24 May and [Deal Town Gardens](#), 28 June.

In East Sussex visit fourteen beautiful gardens across Seaford on four dates including [101 Clementine Avenue](#) which enjoys Downland and sea views with cottage, coastal and drought tolerant planting. More about [Seaford Gardens here](#).

[Lepe House](#) with its 14 acres looking over the Solent in Hampshire all opens in 2026.

Photo Left: Wylam House, Devon - new in 2026



Show stoppers

New for 2026 is [Normans Hall in Macclesfield](#). Spread over 3 acres, the spring gardens consist of a snowdrop walk, a daffodil dell and a bluebell woodland. In the summer a large rill with roses at the front of the house comes into its own. Visit the new woodland with over 100 birch trees of variety and a selection of different herbaceous gardens. Opens 22 February and 14 June. For details [click here](#)

English idylls abound among the 2026 gardens, try the simply superlative [Littlethorpe Manor](#) 11 acres of gorgeous gardens from a dreamy walled garden and wisteria walk to precision hornbeam hedges and a contemporary Physic garden there is much to explore. [Clifton Castle](#) also near Ripon, with its impressive gardens and parkland has wooded pleasure grounds with follies, cascades and wild flowers. In Bedfordshire [Liscombe House](#) returns revitalised with designer Jinny Blom blending history with renewal.

In Cheshire, [Harewood, Disley](#) - which dipped its hoe in the water in 2025 and enjoyed the experience so much it's returning with two dates in 2026 - is an extensive garden surrounding a restored 1870s house and is a plant lover's paradise.

The wonderfully eclectic and romantic garden at [Caisson House, Bath](#) opens again for the Scheme on 8 April and the old roses at the quintessentially English [Cadenham Manor in Wiltshire](#) will be on show when this wonderfully romantic idyll opens in June.

For a smorgasbord of gardens try the delightful collection of 12 gardens in the twin Cotswold villages of [Broughton Poggs and Filkins](#) in Gloucestershire which open in May. They include Pigeon Cottage, the tiny, unexpected oasis of great atmosphere at the end of an insignificant path!

In Warwickshire, [The Manor House at Ashby St Ledgers](#) is famed for being the home of Robert Catesby of Gunpowder plot notoriety with its beautifully landscaped gardens the work of Edwin Lutyens at the turn of the century. The new owners have restored the ancient walled garden with the help of talented designer Daniel Combes.

Arabella Lennox-Boyd's coastal masterpiece, [East Cliff on the Isle of Wight](#) opens again on 6 June, as does the magical garden at [Dyffryn Fernant in Fishguard, Pembrokeshire](#).

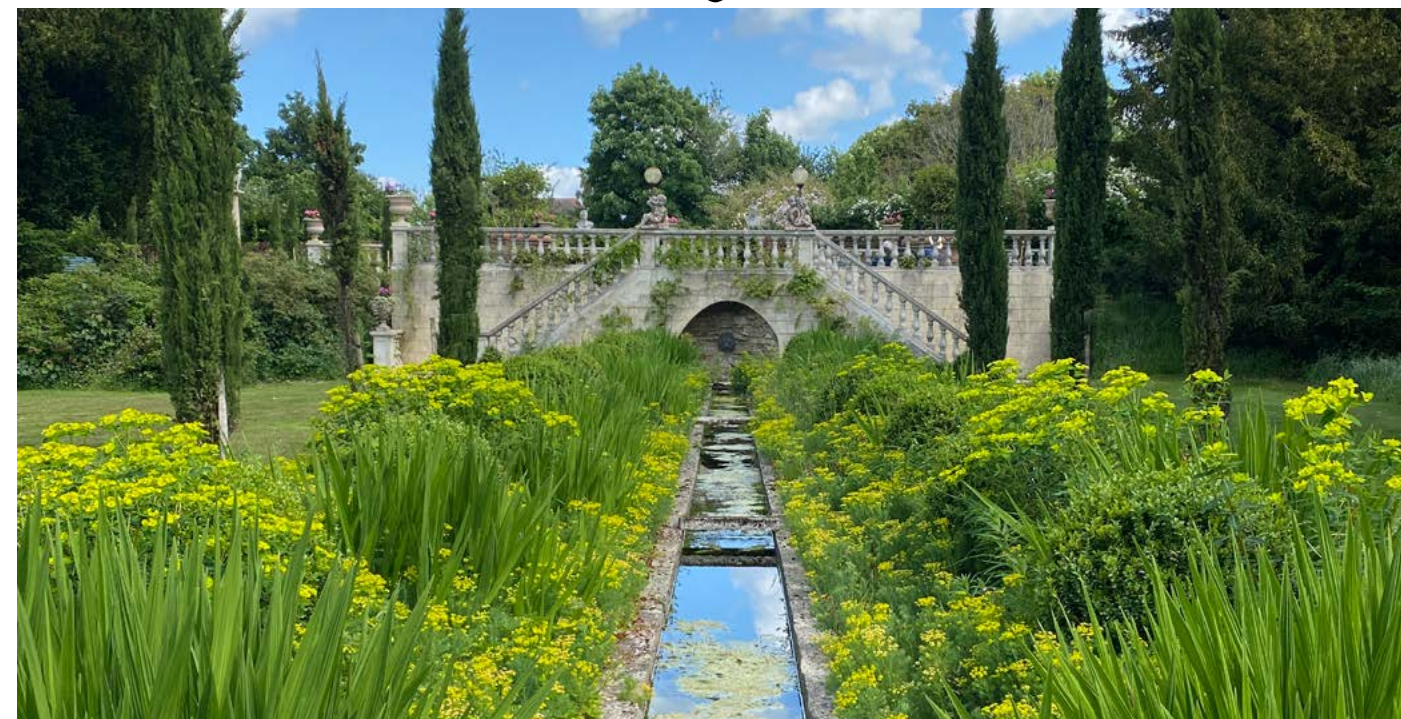
Smaller but equally magical is [100 Knollys Road, Streatham Hill, London](#). A unique hillside garden in development since 2021. Divided into sections, this south facing garden contains many pollinator friendly plants and habitats, with an emphasis on recycling. A small gully winds down the path to channel rainwater, alongside a tiered, planted concrete terrace and fruit and vegetable beds. The space has been designed to be magical for children.

With over 3,200 gardens opening this year this is just a taster of what's in store. For specific gardens, themes or regions contact vicky@ngs.org.uk



The Old Rectory, Pulborough, West Sussex © Vicky Flynn [details here](#)

Rectories & Old Vicarages



For centuries, vicarages have been at the heart of quintessential English village life, built with the same care and due diligence given to churches they were generally built to last with fantastic outlooks and big gardens. The demand for these properties continues today and their gardens provide the perfect space for a National Garden Scheme open day.

In 2026, 75 Rectories and Old Vicarages will open their gates - among them [The Old Rectory, Farnbrough, Oxon](#) that was once home to John Betjeman and described as 'one of the loveliest old Rectories in the country'. The stunning 8 acre garden has been opening for the National Garden Scheme since 1971. In 2026 you can visit on 12 April, 10 May, 24 June and 29 July.

Other notable gardens include:

[East Ruston Old Vicarage, Norfolk](#) - opens 18 April & 17 October

[The Old Rectory, Pulham, Dorset](#) - opens 2 & 6 August and By Arrangement

[The Old Rectory, Litton Cheney, Dorset](#) - opens 26 & 29 April & 5 July and By Arrangement

[The Old Rectory, Wrestlington, Bedfordshire](#) - opens in May and By Arrangement

[The Old Rectory, Bletchingley, Surrey](#) - opens 7 June (pictured above)

[Sullington Old Rectory, West Sussex](#) - opens 7 & 8 July

[The Old Rectory, Pulborough, West Sussex](#) - opens 13 & 14 June

[Fovant House, Salisbury](#) - redesigned by Arabella Lennox Boyd in 2016 - opens 30 May.

[Hoe Hall, Dereham, Norfolk](#) - By Arrangement 15 May to June for groups of 10-50.

[Pugin Hall, Dorset](#) - once Rampisham Rectory, designed in 1847 by Augustus Pugin, opens 17 May and 14 June.

Photo gallery: [Rectories and Vicarages 2026](#)



Special Garden Events

The National Garden Scheme hosts a number of special garden events each year offering something extra such as a guided talk by the head gardener, special refreshments or privileged access. You can [find them all here](#)

As part of the National Garden Scheme's partnership with **English Heritage** people can visit a selection of English Heritage gardens after hours and enjoy a historical talk in the gardens to enrich the visitor experience.

New in 2026 are: Boscobel in Shropshire; Witley Court in Worcestershire; and Eltham Place in London; Richmond Castle in North Yorkshire. [See them all here](#)

In Dorset enjoy nine special access events including to designer **Jasper Conran's** garden at [Bettiscombe Manor](#). Designer Jasper Conran has given one of England's loveliest smaller houses, Bettiscombe Manor, a garden to match, with orchards, mellow brick enclosures, and broad beds flanking an unforgettable view of the Vale, looking down to the sea. The garden has a magical quality, it is informally planted and flower-filled, reflecting the designer's predilection for constantly evolving and creative planting. Pre-book for 11 June.

Lord and Lady Fellowes garden at [Stafford House in Dorchester](#) includes a river walk and tree planting in the style of early C19 Picturesque. Humphry Repton prepared landscape proposals for the garden and the designs were later implemented, they were also included in his famous Red Books. Pre-book for 3 July.

[See all of Dorset's special events here.](#)

We've got two private tours at [Hampton Court Palace](#) and special access to the [Inner and Middle Temple Gardens](#) in London too.

Other special events include:

An evening event at The Exchange Erith with garden designer **Sarah Price** on 17 June - [details here](#).

At [The Newt](#) in Somerset this September

In Powys, tours at [Vaynor Park](#) on 24 June and [Fairedene Gallery Garden](#) home of artist **Frieda Hughes**, on 10 June and 15 July.

Lasborough Park will open on 24 June and 26 August - [details here](#) - and The Walled Garden, Wormsley, Buckinghamshire also opens for the National Garden Scheme on 8 July. [Details here.](#)

You can [find them all here](#)

Lasborough Park, Tetbury
will open on 24 June and 26
August - [details here](#)



“Gardening is deeply personal; it reflects the individual behind it.”

Image ©Andrea Gilpin

Gardens and Health Week

Promoting the goodness of gardens

Our [Gardens and Health Programme](#) raises awareness of the physical and mental health benefits of gardens and gardening for everyone. Celebrated in May each year with a dedicated Gardens and Health Week (2-10 May in 2026), we work to promote gardens and health throughout the year, linking service users from our beneficiaries with free garden visits and funding garden and health projects.

Each year we publish an accompanying interactive *Little Yellow Book of Gardens and Health* online. Full of insightful case studies from those who find solace, restoration and joy in gardens and gardening and with expert advice and influencer content it's been named a '[Horticultural media must](#)' by [Pro Landscaper Magazine](#) in 2025

In 2026 the theme is *The Great Outdoors*.

If you are looking for gardeners or garden owners with great stories to tell we are here to help. Examples from 2025 include:

- [Dr Susan Taheri](#) - a GP in Devon who runs a Green Social Prescribing project
- [The Physic Garden at Littlethorpe Manor](#) where medicine meets the magic of horticulture.
- [Stacey McGovern](#), a garden owner from Hertfordshire whose cancer diagnosis encouraged her to change her priorities and take gardening more seriously.
- [Designer Hazel Gardiner](#) on how gardens have inspired her life - and her health
- [The story of Pen and Joss](#), teenage sweethearts who found each other and a shared love of gardens in later life.
- [90 year olds Jean and Peter Block](#) on how gardening keeps them young
- [Influencer and garden visitor Lucy Mantle](#) on how she found peace in the garden after a life changing diagnosis
- [English Heritage trainee](#) on the sensory benefits of gardening
- [Gardener Danny Clarke - aka The Black Gardener](#) - on the importance of community gardens in nurturing meaningful connections and community cohesion

Read all of the above and more in the 2025 *Little Yellow Book of Gardens and Health* by [clicking here](#)

For more about the week and the case studies it generates [click here](#)
For copies of the *Little Yellow Book of Gardens and Health* [click here](#)
To see who we fund in this area [click here](#)



CASE STUDY: Botanical Brothers – East London

A National Garden Scheme funded project with Queen's Nurses that aims to improve the mental health of fathers in the community. The gardening project connects with fathers to support their emotional health, providing an environment of calmness, tranquility and safety to raise awareness about mental health, and improving access to mental health services contributing to improved family relationships and building community capacity. The men are involved in the planning and development of the garden project from start to finish. Fathers can access a range of professional support, safe and confidential conversation, breaking down some existing barriers that hinder client engagement. Father/child relationships benefit by bringing fathers and children together, to enhance attachment and bonding and improve family relationships by playing and learning together.

Men's Health

Gardens as a Gateway: Why the “Green Prescription” is Key for Men's Health
by National Garden Scheme CEO, Dr Richard Claxton

As a former GP, I know first-hand the challenge of engaging men with their own health. We often face a “reluctance gap” where men wait too long before entering a clinical setting. However, the National Garden Scheme's 2026-2030 Strategic Plan identifies gardens not just as beautiful spaces, but as vital tools for physical and mental resilience. Our data shows that 2025 was a record-breaking year for the charity, allowing us to donate over £3.8 million to nursing and health beneficiaries—including major support for Parkinson's UK, Macmillan Cancer Support, and Marie Curie. For men, these gardens offer a low-pressure, “side-door” approach to wellbeing. Whether it's through the physical activity of gardening or the quiet mental health benefits of visiting one of our 3,500 private spaces, gardens provide a space for reflection and recovery that a doctor's surgery often cannot.

Our goal for the next five years is to broaden this reach, ensuring that the benefits of green spaces are accessible to everyone, including those who do not usually engage with nature. We are increasingly funding “gardening as therapy” projects and initiatives like the Army Benevolent Fund, which uses horticultural therapy to support veterans dealing with complex mental and physical issues. By promoting our Open Gardens, and through publications like the “Little Yellow Book of Gardens and Health” and our annual Gardens and Health Week, we want to normalize the idea that looking after a garden—or simply spending time in one—is a legitimate and effective way to manage health. For the media section focused on men's health, the message is clear: we need to move the conversation outdoors, where the barriers to entry are lower, but the impact on long-term wellbeing could be profound.

National Garden Scheme CEO, Dr Richard Claxton is available for expert commentary / features / interviews relating to green prescribing and the benefits of gardens for health.
To speak with Richard please contact vicky@ngs.org.uk



Key Data Points for Outreach

- **Significant Impact:** The National Garden Scheme is the most significant charitable funder of nursing in the UK, having donated over £77 million since 1927.
 - **Mental Health Focus:** A cornerstone of the 2026-2030 strategy is raising awareness of the mental health benefits of gardens to influence public opinion and government policy.
 - **Support for Long-term Conditions:** In 2025 alone, National Garden Scheme funding supported 10,000 people living with Parkinson's and 78,000 visits to Maggie's cancer support centers.
 - **Community Reach:** The charity funded 114 community garden projects in 2025, many in urban areas aimed at improving local health and wellbeing.
- [Key Men's Health Dates for 2026](#)
- **International Men's Health Week** traditionally takes place during the week leading up to and including Father's Day - 2026: Monday 15th June – Sunday 21st



Community gardens and gardens for health and wellbeing

Over the last decade community gardens have become an increasingly significant part of the National Garden Scheme's portfolio of gardens and an established section of the charity's annual distribution of funds. In November 2024 this work was supported by a generous £1.5 million grant from the Julia Rausing Trust. ([read more](#))

All over the country community gardens are demonstrating the ability to bring people together and introduce them to the joys of gardening and spending time in a garden. They have made a particular and significant contribution in towns and cities where many people do not have their own garden and where access to green space can be limited. They have also demonstrated that they are a rich catalyst for diversity, engaging individuals and groups from the broad range of ethnic and religious backgrounds that make up the population of contemporary Britain, enabling them to showcase their own gardening practices as well as benefitting from access to a garden space.

In 2025 the National Garden Scheme announced the distribution of £288,876 of funding to 114 community garden projects across England, Wales and Northern Ireland through its Community Garden Grants. ([read more](#))

The new funding from the Julia Rausing Trust will support the National Garden Scheme's work in this area over five years with the next tranche of Community Garden Grants funding announced during Community Gardens Week 6-12 April.

Giving that gives back

Many of the funded community projects in turn open for the National Garden Scheme completing a virtuous circle of giving and giving back. Examples include:

[Stream Walk Community Garden](#), which opens as part of Whitstable Town Gardens in Kent
[Pakistan Association Liverpool Wellbeing Garden](#) which opens as part of the Canning and Toxteth Gardens, Liverpool

[Rhubarb Farm, Nottingham](#), a 2-acre horticultural social enterprise that provides training and volunteering opportunities to 60 ex-offenders, drug and alcohol misusers, older people, school students, people with mental and physical ill health and learning disabilities.

[Ponthafren, Montgomeryshire](#) is a registered charity that provides a caring community to promote positive mental health and wellbeing for all.

[TWIGS Community Garden, Wiltshire](#) provides a therapeutic environment in which people experiencing mental health issues can gain new skills and confidence through activities that include gardening, conservation and crafts.

[More on our Community Garden Grants](#)

For Community Garden case studies see:
[Stories on our website](#)

Our Community Gardens Instagram [here](#)



Garden People

CASE STUDIES

Behind every great garden are great gardeners, and with over 3,200 gardens opening in 2026 we have thousands of gardeners with inspiring stories to tell. Whether you want to know how they create their green spaces, or the health benefits they derive from their garden, we can connect you. You'll find some great case studies in past editions of our [Little Yellow Book of Gardens and Health](#) and in the [gardens and health section on our website](#) – or contact vicky@ngs.org.uk who can help you find the garden and the people you're looking for.

HIGH PROFILE SUPPORTERS

We head into 2026 with a new President, Alan Titchmarsh and a host of Ambassadors keen to promote our work including Fiona Bruce, Joe Swift, Rachel de Thame, Anya Lautenbach (aka the Garden Fairy) and Danny Clarke (aka the Black Gardener). They are happy to consider requests from the press which link to their support of the National Garden Scheme – contact vicky@ngs.org.uk if you have something to pitch to any one of them.





Elsie Wagg by John Singer Sargent c.1893

Now owned by the Thomas H. and Diane DeMell Jacobsen PhD Foundation.

Elsie Margaret Wagg was born in Marylebone, London on 29 January 1876, into a wealthy, close-knit Victorian family. They lived at 40 Bryanston Square and 2 Adelaide Crescent, Hove. She led a philanthropic life and was on fundraising committees for the QICN and the Red Cross. In 1926, as a council member of the QICN, Elsie wrote to chair Sir Harold Boulton suggesting the open garden idea as a way of raising funds for district nursing to run across the 1927 Whitsuntide holidays.

She never married and in 1923, moved to The Hermitage in East Grinstead a large house with extensive gardens, which she opened for the Scheme from 1929 until her death in 1949 and which her brother continued to open until his death in 1969. Sadly the house and garden no longer exist.



Celebrating the National Garden Scheme's Centenary in 2027 100 years of great gardens, great cakes & great causes

In 2027 we mark 100 years of opening exceptional gardens for charity and would love to collaborate with you on telling our uniquely British story.

From the inspiration of Elsie Wagg (pictured left) who is credited with having the idea of opening gardens for charity and the formidable women who ran the campaign in 1927, to the historic gardens that first opened their gates, led by King George V and the gardens at Sandringham, to a wonderful diversity of gardens and gardeners, communities and visitors all supporting the vital work of nursing and health charities today, we have 100's of stories and case studies to share.

Masters research: *The origins of the National Garden Scheme* by Clare Waters

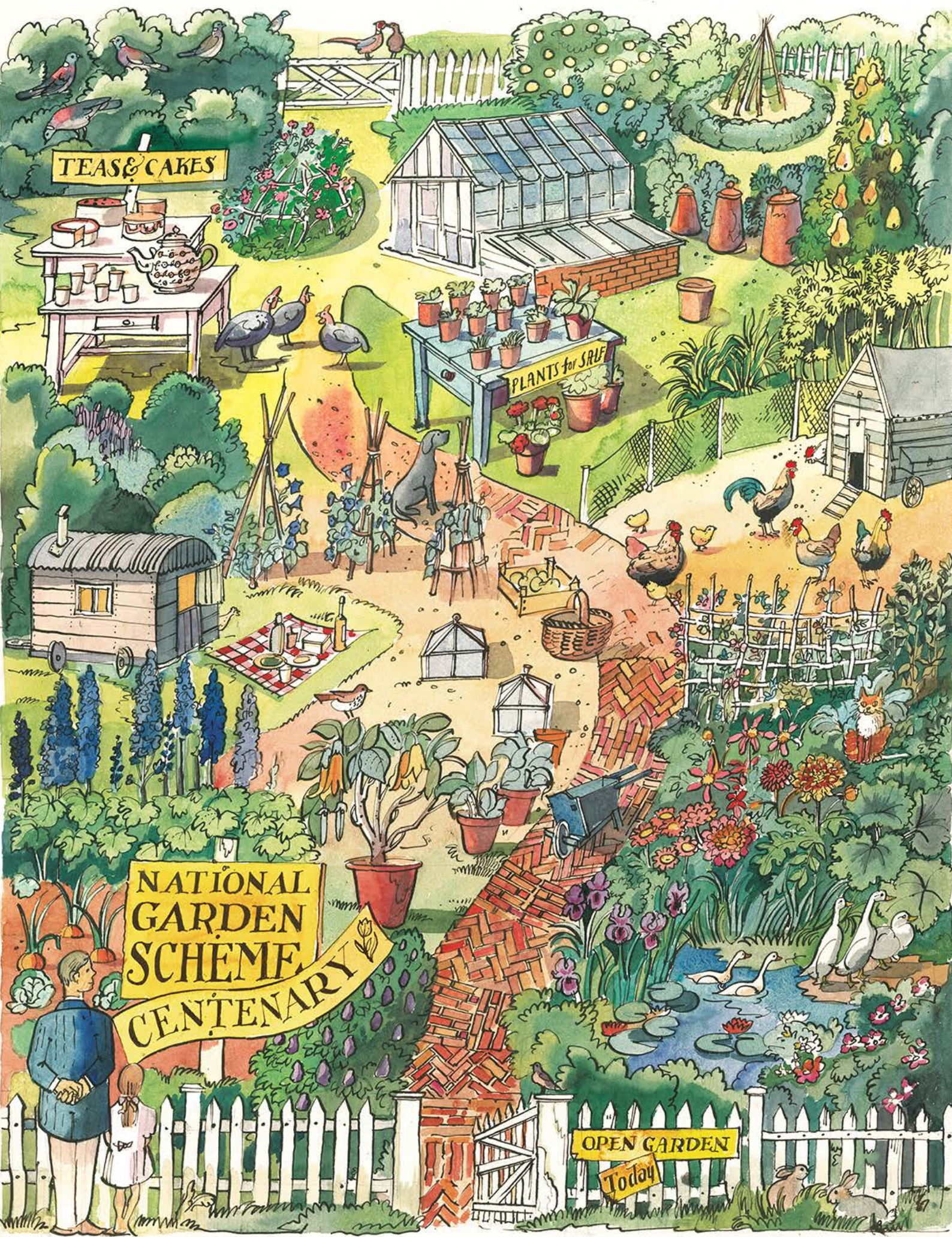
Take a deep dive into the founding of the Scheme and the remarkable people who made it happen. Covering the year 1926-27 Clare's thesis looks at how an idea for a one-off fund raiser to support district nursing went on to thrive for 100 years and was the genesis of opening gardens to the public across the UK. *In 1927 relatively few gardens were open to the general public compared with today. As the Yorkshire Post wrote in an editorial supporting the garden scheme, 'The tendency in England is for private beauties to be zealously reserved from the vulgar gaze' (6 June 1927).* Today, the passion of thousands of garden owners to share their spaces has created a much copied British phenomenon that inspires visitors from home and abroad and continues to raise significant funds for nursing and health charities.

[Read more about our history here](#)

If you would like to be put in touch with Clare Waters email vicky@ngs.org.uk to be introduced.

Two gardens have opened every year (bar Covid restrictions) in support of the National Garden Scheme since 1927; [Ramster](#) in Surrey and [Sandringham](#) in Norfolk. In 2026 [59 founding gardens](#) are opening in the year ahead from [Fallodon Hall](#) in Northumberland to [Prideaux Place in Cornwall](#). See them all [here](#)

Our goal is to have 100 founding gardens open in 2027.



Branded merchandise

We'll also be marking our special year with the help of specialist growers, nurseries, manufacturers and garden centres with a fabulous array of plants and bulbs, garden care and accessories, and gifts that support our work.

These include: an exclusive design from Matthew Rice (shown left) for tins, tea towels and trays.

A clematis grown by Raymond Evison in celebration of our 100 year partnership with the QICN, a Harkness rose, garden stakes from LV Bespoke and a pair of National Garden Scheme gardener ducks and a baker duck from DCUK.

Product launches are planned for this year and next.

For more information about these and many more products contact Anna@ngs.org.uk

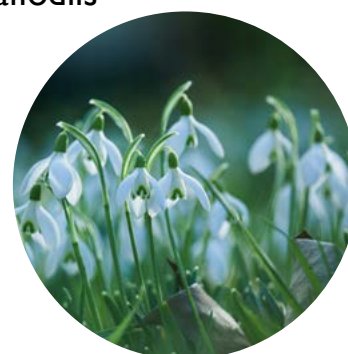


The year ahead

There's always something happening at the National Garden Scheme, here's a taster of what's in store for 2026

January - March	Early garden openers snowdrops, spring flowers and daffodils Snowdrop Gardens Mother's Day Gardens
April	Tulips and Community Gardens Week (31 March - 6 April) with National Garden Scheme funding announcement press release Easter Gardens Launch of Garden Biodiversity survey date TBC
May	Flurry of garden openings as the weather warms We're at RHS Chelsea - come say hello! Gardens and Health Week 2 - 10 May with publication of our annual <i>media must have</i> : Little Yellow Book of Gardens and Health - 2026 theme: The Great Outdoors
June	Garden openings galore Father's Day gardens 1-7 June volunteers week - celebrating the 3,000+ garden owners and 600+ volunteers who support the National Garden Scheme
July	High summer gardens Great British Garden Party official campaign week 13-19 July - championed by Dame Mary Berry. For more information of the Great British Garden Party click here - Images supporting the event including Dame Mary Berry can be found here: GBGP Photo Gallery
August	Family friendly, affordable garden visits during the summer holidays
September	End of summer colour and Grow Your Own gardens
October	Autumn colour and woodland gardens Launch of 2027 Community Garden Grants application process
December	Annual Impact Report released Christmas craft ideas and recipes

For bespoke garden lists and image galleries for seasons, themes or regions contact vicky@ngs.org.uk



Charitable Impact

2025 garden visits raised a record £3.875m for nursing and health charities

2025 was another landmark year for the National Garden Scheme with a record £3,875,596 donated from funds gathered at garden openings throughout the year. The donations helped thousands of people living with cancer, Parkinson's, poor mental health, or the pressures of unpaid caring, by supporting the nurses, health professionals and case workers who care for them.

Our donations also reached hundreds of gardens and health projects. In 2025, 114 new gardens received Community Garden Grants*, and five new nurse-led projects were funded through our NGS Elsie Wagg (Innovation) Scholarships – bringing vital support to many communities, often in areas of deprivation. We also continued to fund the training and welfare of gardeners, whose skills underpin horticulture throughout the country.

Commenting on this year's donations, National Garden Scheme Chief Executive Dr Richard Claxton said: "It's nearly 100 years since our charity was formed to support district nursing, and our commitment to nursing care remains central. Long-term partnerships with Macmillan Cancer Support, Marie Curie, Parkinson's UK, the Queen's Institute of Community Nursing, Hospice UK and Carers Trust are the bedrock of our donation programme. With the lion's share of this year's donation; £2,725,000 going to these much-loved nursing and healthcare charities.

"As the NHS and Social Care sectors struggle to deal with the scale of need, the sustained funding from the National Garden Scheme allows these charities to continue the provision of critical community nursing services, end of life care, and respite for families and carers across the UK."

To find out more about our impact in 2025 and who our funding will support in 2026 [click here](#)

Donations made at the end of 2025 garden season

Carers Trust
£450,000

Hospice UK
£450,000

Macmillan
Cancer Support
£450,000

Marie Curie
£450,000

Parkinson's UK
£450,000

QICN
£475,000



Gardens and Health

Maggie's	£125,000
Horatio's Garden	£110,000
Army Benevolent Fund	£ 80,000
Country Trust	£ 35,000

Crossfire Trust	£43,000
King's College Hospital	£37,828
Grow, Sheffield	£27,411
Grangeway Community Garden	£20,500
Green Hub, Surrey	£20,000
Douglas House (Turning Point)	£18,921
Healthy Minds	£14,060
Mount Vernon Cancer Centre	£10,000

Support for gardeners

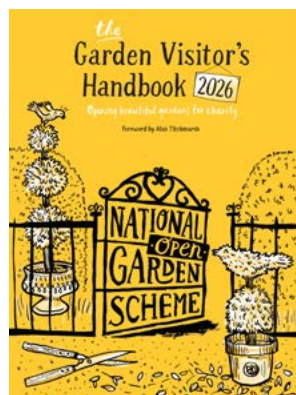
English Heritage	£125,000
Perennial	£100,000
National Botanic Garden of Wales	£ 26,000
Bankside Open Spaces Trust	£ 25,000
The Garden Museum	£ 24,000
Professional Gardeners' Trust	£ 20,000

Community Garden Grants

114 projects	£288,876
--------------	----------

TOTAL	£3,875,596
--------------	-------------------





Additional notes for editors

The 2026 Garden Visitor's Handbook which lists all the gardens opening for the National Garden Scheme will be published in early February and is [available online here](#)

For a READER OFFER discount of £2 off rrp please email vicky@ngs.org.uk for information, images and your reader offer code.

2026 gardens at a glance

Over 3,200 gardens
Over 700 new and returning
497 NEW gardens
195 Group gardens
28 allotment groups
60 community gardens
14 hospice gardens
1,575 welcome dogs on leads
1,632 offer plants for sale
By Arrangement Only – 339
Also By Arrangement – 590

Image galleries and seasonal gardens

List of [New Gardens 2026](#)

Taster images of new and returning gardens [CLICK HERE](#)

[List of gardens open January - March](#)

[Early openers Image Gallery](#)

List of [Easter gardens](#) - Easter garden [images](#)

List of [Mother's Day gardens](#)

[Mother's Day images](#)

List of [Father's Day gardens](#)

For bespoke garden lists and image galleries for seasons, themes or regions contact vicky@ngs.org.uk

Additional notes for photographers and broadcasters

The National Garden Scheme is happy to connect you to our garden owners to arrange visits for photography and broadcast media. Most are keen to welcome you, some are media shy. If there is a garden you would like to visit please send an outline of your requirements to vicky@ngs.org.uk who is happy to make the initial approaches.

Garden owners are vitally important to the success of the National Garden Scheme, they generously allow public access to help us raise funds for nursing and health charities, please treat them with courtesy.

Images please note:

All images shared in the image galleries in this pack must only be used in connection with National Garden Scheme openings, news or features.

Copyrights, where shown, must be observed.



About the National Garden Scheme

The National Garden Scheme gives visitors unique access to over 3,300 exceptional private gardens in England, Wales, Northern Ireland and the Channel Islands, and raises impressive amounts of money for some of the UK's best-loved nursing and health charities through admissions, teas and cake.

Thanks to the generosity of garden owners, volunteers and visitors we have donated more than £77.8 million to our beneficiary charities, and in 2025 made donations of over £3.8 million. Founded in 1927 to support district nurses, we are now the most significant charitable funder of nursing in the UK and our beneficiaries include Macmillan Cancer Support, Marie Curie, Hospice UK, Parkinson's UK, Carers Trust and The Queen's Institute of Community Nursing.

The National Garden Scheme doesn't just open beautiful gardens for charity – we are passionate about the physical and mental health benefits of gardens too. We fund Community Gardens and projects that promote gardens and gardening as therapy, and in 2017, we launched our annual Gardens and Health Week to raise awareness of the topic in May each year. Our funding also supports the training of gardeners and offers respite to horticultural workers who have fallen on difficult times.

To buy our Garden Visitor's Handbook or find a garden near you visit our website www.ngs.org.uk

Registered charity number: 1112664

For more information or images or to be put in touch with a spokesperson, please contact: Vicky Flynn, Communications Manager, Email: vicky@ngs.org.uk Tel: 01483 213908

18 Copperkins Lane, Buckinghamshire

A fabulous, compact ½ acre garden with a lawn, herbaceous borders, wild flowers, orchard, vegetable beds, playhouse, summerhouse, and pool. Opens 19 July.

[CLICK HERE FOR DETAILS](#)

